



Field Activity Advisory Levee Penetration Survey January 14, 2015

The California Department of Water Resources (DWR), as a component to the San Joaquin River Restoration Program (SJRRP) and the FloodSAFE California initiative, has scheduled levee penetration surveys on selected portions of Reaches 2A, 4A and the Eastside Bypass. Data collected through this survey contributes to studies such as channel and structural improvement projects.

Who: Department of Water Resources and Kleinfelder Inc.

What: Levee penetration surveys are performed visually. The location of each penetration will be recorded by handheld GPS device and photographed. No ground disturbing activities are planned. The survey will be performed by a crew of up to five people. Field engineers will access the site by vehicle or on foot.

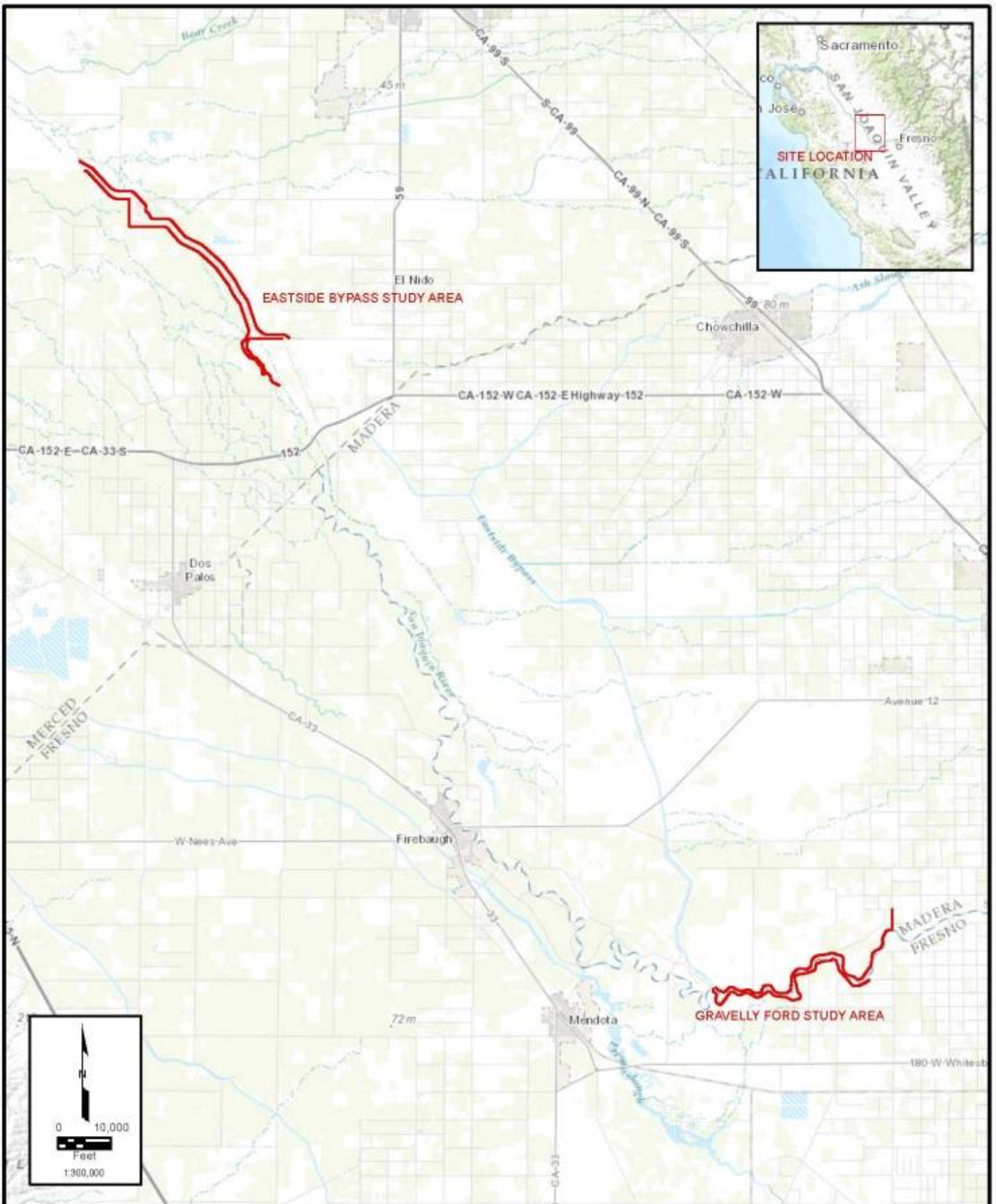
When: The survey is planned to start the week of January 19 and take five business days to complete. The surveys may be extended depending on weather conditions. Surveys are conducted between 7 a.m. and 5 p.m.

Where: Survey sites include all Reach 2A project levees. Surveys of Reach 4A and Eastside Bypass include each levee bank and start at a point approximately 2 river miles upstream of Washington Boulevard to the Eastside Bypass Control Structure. These sites are identified in the map on the next page (Figure 1).

If you have questions, please contact the SJRRP Landowner Coordinator, Craig Moyle. Craig's contact information is provided below.

Craig Moyle, Landowner Coordinator
Office (operator): 916-924-8844
Office (direct line): 916-418-8248
Mobile: 916-642-6383
Fax: 916-924-9102
Email: craig.moyle@mwhglobal.com

For more information, please visit the SJRRP Web site at www.restoresjr.net.



PROJECT NO. 128111
 DRAWN: 31 Oct 2014
 DRAWN BY: A.Makovics
 CHECKED BY: N.Dahlen
 FILE NAME: Project_128111_Figure1

SITE VICINITY MAP

SAN JOAQUIN RIVER RESTORATION PROGRAM
 PRIORITY I STUDY AREA

FIGURE

1