



# Water Management Technical Feedback Meeting


September 4, 2009  
Visalia, CA



## Agenda Overview



---

- Comments on Meeting Notes (10 min.)
- Status Update on Water Management Activities (10 min.)
- Interim Flow Recapture (20 min.)
- Restoration Flow Guidelines (20 min.)
- MC/FKC Capacity Correction Update (20 min.)
- Public Comment (5 min.)
- Agenda for Next Meeting (5 min.)




---


**Comments on Meeting Notes**



---


**Status Update on  
Water Management Activities**





## Water Management Activities

- Restoration Flow Guidelines
- I6(a) Recapture & Recirculation
- I6(b) & Recovered Water Account
- Part III Guidelines
- Interim Flow Water Rights Petition
- Madera/Friant-Kern Canal Capacity Correction
- Friant-Kern Canal Pump-Back Facilities
- Water Transfers

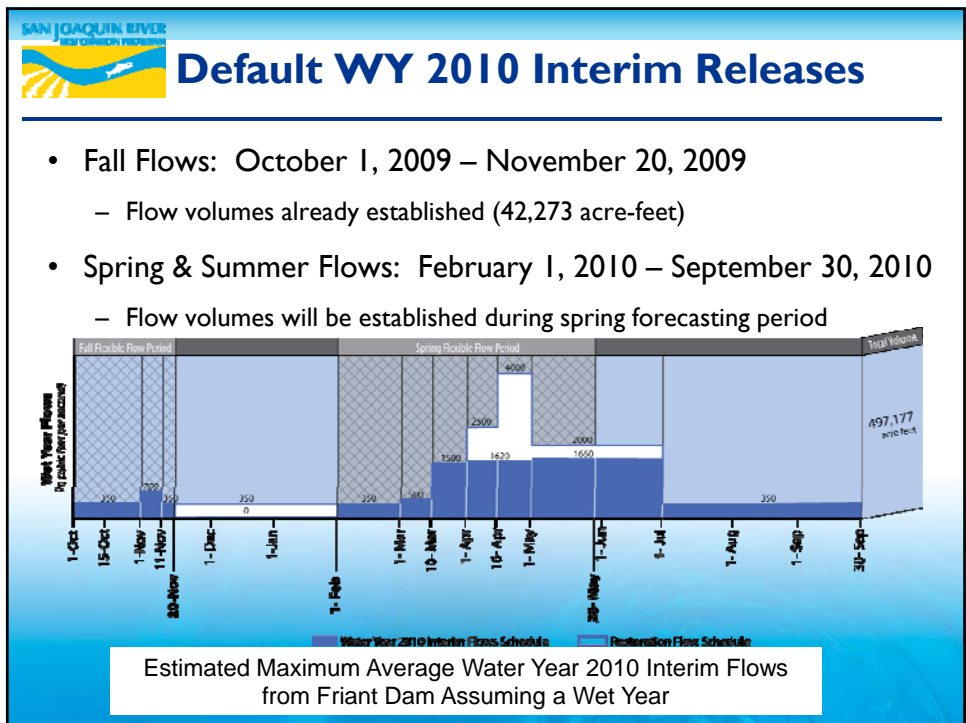


## Interim Flow Water Right Petition

- Petition was submitted
- 2 Letters of Support
- 2 Protests
  - SLDMWA and Westlands
  - Exchange Contractors
- Releases scheduled for October 1<sup>st</sup>



# Interim Flow Releases

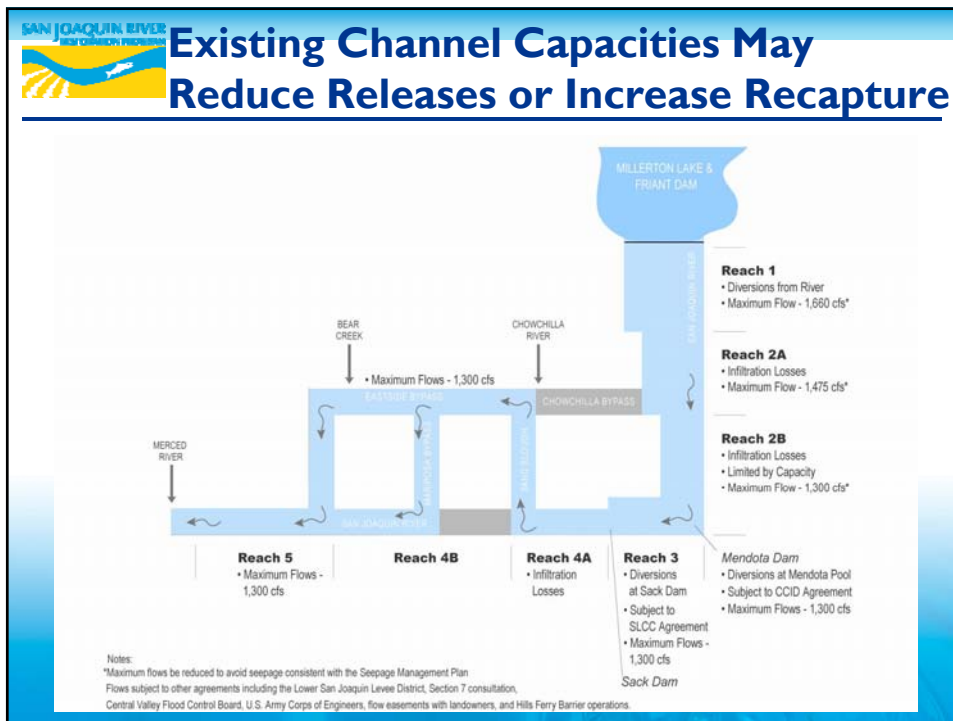



**SAN JOAQUIN RIVER**  
FRIANT DIVERSION PROGRAM

## Fall Interim Flows – RA Recommendation

Interim Flow Start Date / Duration	Riparian Release (cfs)	Interim Flow Release (cfs)	Total Release from Friant Dam (cfs)	Volumes (af)
October 1 <sup>st</sup> – October 30 <sup>th</sup>	160	190*	350	20,826
October 31 <sup>st</sup> – November 13 <sup>th</sup>	130	570*	700	19,438
November 14 <sup>th</sup>	120	210*	330	654
November 15 <sup>th</sup> – November 20 <sup>th</sup>	120	0	120	1,428
			Total Release Volume:	42,347


\* Maximum flow available for Recapture






## Other Factors May Reduce Releases or Increase Recapture

- Blunt-Nosed Leopard Lizard
  - Flows in the Eastside and Mariposa bypasses could be impacted by the results of preflow release surveys
- Vernal Pools, Delta Button-Celery, & Alkali Sinks
  - Surveys during Interim Flow release periods in the Eastside and Mariposa bypasses will determine the need for reductions in flows or increases in recapture rates
- Delta Fish Species
  - Temperature monitoring at Merced confluence to determine the need to reduce Interim Flow releases or increase recapture rates
  - Ongoing consultation with USFWS, NMFS & DFG on recapture at Jones & Banks pumping plants





## Interim Flow Recapture



## Monitoring Locations

- Flow in excess of requirements or downstream channel capacities are recapturable
- Flows hitting Merced River confluence are recapturable





## RA Recommendation with Anticipated Hydrology

Begin Date	End Date	TOTAL Flows by Reach (Interim Flows, Riparian Deliveries and Imported Delta Supplies) Under the RA Recommended Proposed Action (cfs)									
		Head of Reach 1	Head of Reach 2A	Head of Reach 2B	Head of Reach 3	Head of Reach 4A	In Reach 4B1	In Reach 4B2	In Bypass System	Head of Reach 5	Merced River
10/1/2009	10/30/09	350	195	115	715	115	0	115	115	115	415
10/31/09	11/13/09	700	575	475	1075	475	0	475	475	475	775
11/14/09		330	215	135	735	135	0	135	135	135	535
11/15/09	11/20/09	120	5	0	600	0	0	0	0	0	400

DMC Exchange (Potential)

DMC Exchange (Potential)

NWR - Lone Tree Unit & East Bear Creek Unit Exchange (Potential)

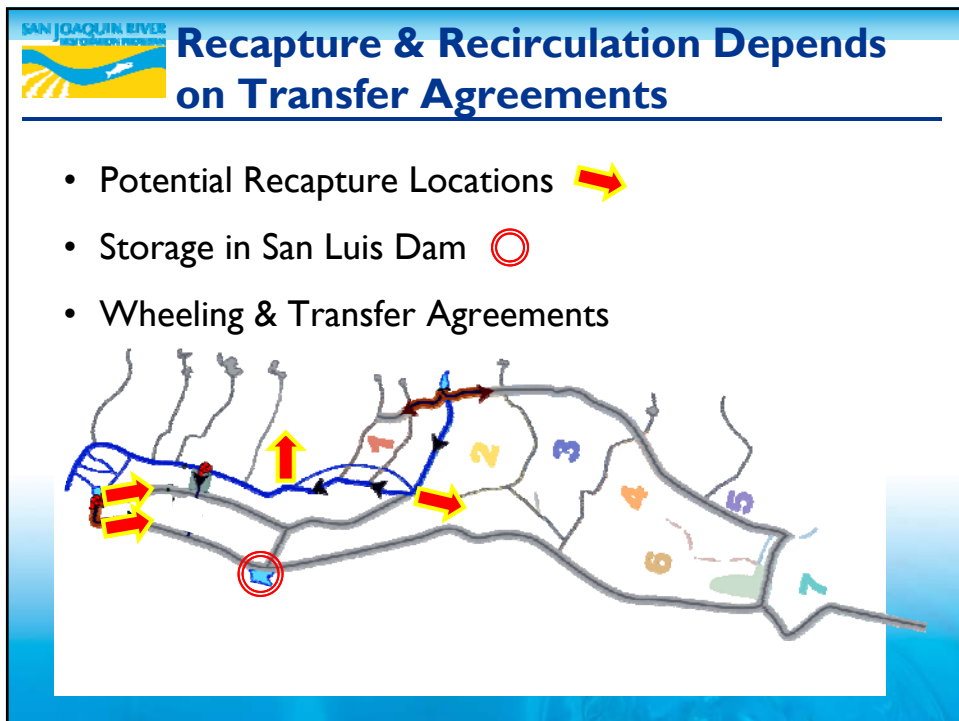
Lower SJR Exchange & Delta Recapture (Potential)

**SAN JOAQUIN RIVER**  
Water Conservation Program

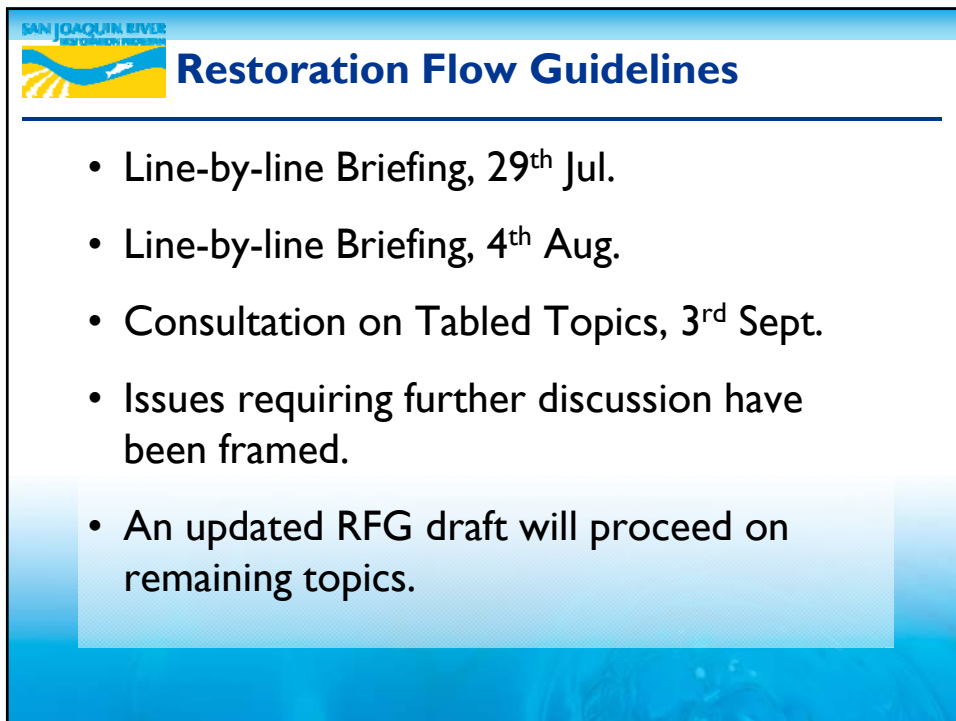
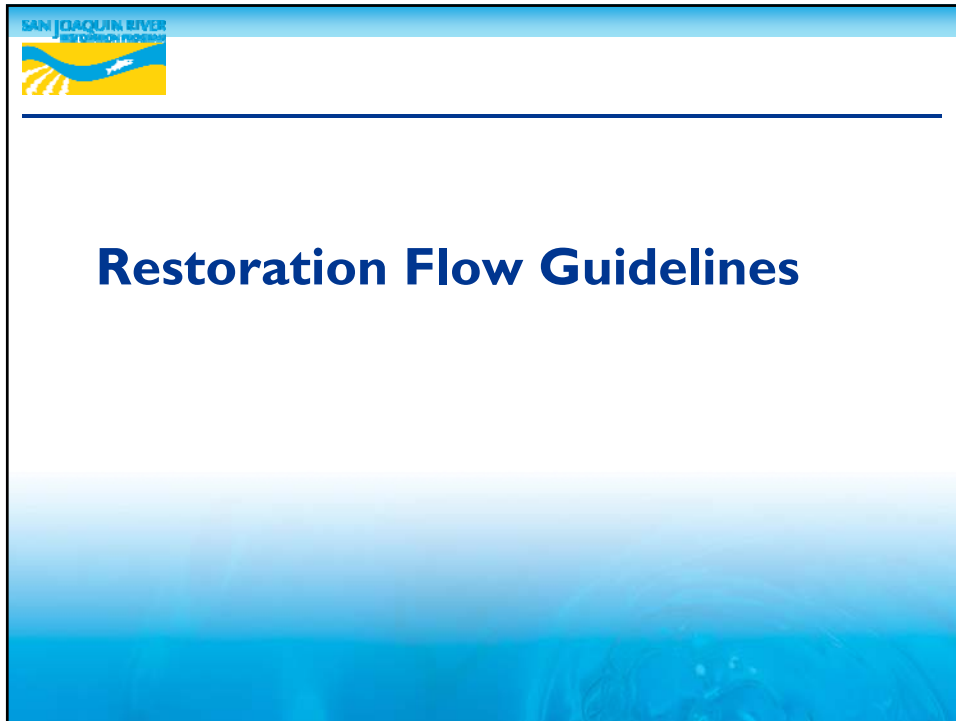
### Recapturable Fall Interim Flows – RA Recommendation

Interim Flow Start Date / Duration	Riparian Release (cfs)	Interim Flow Release (cfs)	Total Release from Friant Dam (cfs)	Volumes (af)
October 1 <sup>st</sup> – October 30 <sup>th</sup>	160	190*	350	20,826
October 31 <sup>st</sup> – November 13 <sup>th</sup>	130	570*	700	19,438
November 14 <sup>th</sup>	120	210*	330	654
November 15 <sup>th</sup> – November 20 <sup>th</sup>	120	0	120	1,428
Total Release Volume:				42,347

\* Maximum flow available for Recapture

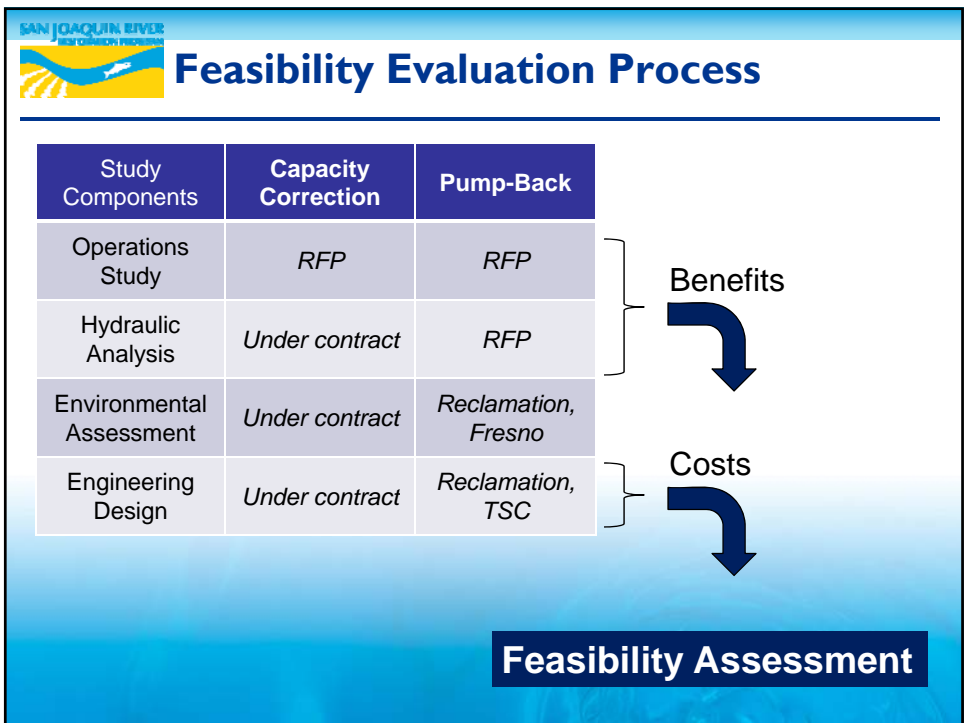










# Madera & Friant-Kern Canals Capacity Correction Assessment and Friant-Kern Canal Reverse Flow Status Update





## Pump-Back Progress

- Blunt Nosed Leopard Lizard fall surveys in the Poso Creek area are currently being conducted by biology consultant
- Reclamation site visit to White River Check (potential pump-back location)
- A bid proposal for pump-back operations and hydraulic modeling is currently being evaluated




## Capacity Correction Progress

- As-Built hydraulic model completed
- A model which uses operational data as hydraulic inputs is expected next week
- Bathymetric survey data will be used during the final calibration of the model
- Consultation with FWA and MCWPA will be arranged following the first round of calibration~ September 28



---

## Public Comment



## Agenda for Next Meeting

---

- Date & Time: October 2, 2009, 8:30am
- Tentative Agenda:
  - 16(a)
  - Water Transfer Provisions
  - RFG
  - Part III Guidelines
  - MC/FKC Capacity Correction Update